



### 1969

George C. Lord II, understanding the value of his land for the public good, sells 199 acres including Laudholm Beach to the Maine Department of Conservation.

### 1978 January

Small group meets with Mary Lord Kline to discuss the future of Laudholm Farm. Jean Sotiropolis-Foss, Mort Mather, Betty Joyce, Ruth Howard, Michael Walek.



### 1980 september

Wells Board of Selectmen writes formal letter to Maine State Planning Office requesting funding for a possible land and buildings purchase.

### 1982 February

Laudholm Trust is formed to receive gifts in support of the Wells National Estuarine Sanctuary which, as a Federally funded project, cannot directly receive private funds.

### March

Articles of Incorporation are filed with the State of Maine establishing Laudholm Trust as a corporation and a tax-exempt organization under section 501(c)(3) of the IRS Code.

### September

The U.S. Department of Commerce, through the National Oceanic and Atmospheric Administration (NOAA), awards \$580,000 to be matched by an equal amount raised locally.

### 1983 March

Garnsey Bros. Insurance Agency of Moody donates space in the Garnsey Lighthouse building for a Laudholm Trust Office to be staffed full time beginning in May.

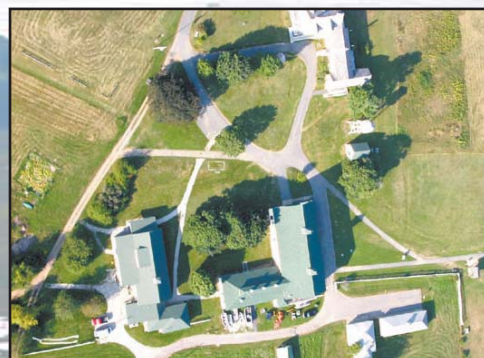
### September

Laudholm Trust sets its fundraising goal at \$950,000.

### December

Earle G. Shettleworth, Director of the Maine Historic Preservation Commission, announces that Laudholm Farm has been entered on the National Register of Historic Places.

NOAA notifies the State that the Federal grant would be withdrawn three months earlier than expected. Senator William Cohen helps to get the deadline rescinded with the stipulation that the \$580,000 would be matched by March 31, 1984.



### 1984 January

Jack S. Ketchum, retiring president of the University of New England and former Senior Vice President in charge of investments for Union Mutual, is named Chairman of Laudholm Trust Fundraising Drive.

### October

Laudholm Trust purchases first 155 acres of Laudholm Farm at a cost of \$600,000. Acreage includes 90 acres of marsh land, 100 feet of ocean frontage on Drakes Island, and 60 acres of woodland and fields. Phase II will cost an additional \$1 million. Federal and state allocations total \$660,000. Laudholm Trust will raise the balance.

### November

The John Alheim family donates a farmhouse, barn, and 30 acres of land on Laudholm Farm Road to be used as Laudholm Trust headquarters.

### 1985 October

Trail cutting work gets underway through overgrown pastures and woods. Opening guided and self-guided trails is planned for spring 1986.

### 1986 January

The first two trails are opened for walking and cross country skiing. The Trust offers guided tours of Laudholm Farm on Wednesday mornings.

### March

Wells voters approve a conservation easement on 22 acres of Town-owned land at Wells Harbor. The easement is valued at \$465,000, which is counted as a match for federal funds.

### April

Mort Mather receives the New England Environmental Network Award, which is presented by Chuck Hewitt, Director of the Maine Audubon Society.

### June

Laudholm Trust receives \$25,000 from the Maine Historic Preservation Commission toward the restoration of the main house at Laudholm Farm.



### August

The Wells National Estuarine Research Reserve is dedicated in a ceremony on August 31.

### September

Researchers begin three projects to determine the importance of estuaries to commercial fish and marine life in the Gulf of Maine.



### 1987 January

Mort Mather, Laudholm Trust President and Wells Planning Board Chairman, is named winner of Down East Magazine's prestigious 1987 Environmental Award.

### September

Alice Strait organizes the first Laudholm Nature Crafts Festival.

### 1988 May

Laudholm Trust kicks off \$3.3-million campaign to restore and maintain buildings and to start an endowment for future stability. Trust is awarded \$500,000 challenge grant from the Kresge Foundation.

### 1989 Spring

Wells Reserve hosts annual workshop of the National Estuarine Research Reserve System. The Wells Reserve is officially opened.

### Summer

Wells Reserve moves to the farmhouse. Boston Museum Design group is selected to create educational exhibits for the farmhouse visitor center.

### 1990 Spring

Reserve Management Authority is formed as the governing body for the Wells Reserve. Reserve launches the Coastal Conservation Research and Education Project.

### Summer

A volunteer monitoring program is created to measure water quality trends and possible contamination.



### 1991 Spring

Dr. Michele Dionne is hired as Research Coordinator.

### Winter

The 7-mile trail system is completed with the clearing and opening of the Muskie Trail.

### 1992 Fall

Endowment reaches \$1 million. Laudholm Trust membership reaches 2,754.

### Winter

Laudholm Trust is recognized in Washington, D.C. with the Administrator's Award from NOAA.

### 1993 winter

National Trust for Historic Preservation presents award to Laudholm Trust for preserving the buildings and fields of Laudholm Farm along with 4 miles of coastline that form the Wells Reserve.

### 1994 Fall

The hay-and-horse barn is on the cover of the book America Restored, published by the National Trust for Historic Preservation.

### 1996 summer

Wells Reserve offers lodging for researchers and interns in the old barn of the Alheim house.

### 1997 summer

Wells Reserve hosts conference to discuss solving coastal management problems.

### 1999 summer

Wells Reserve initiates Coastal Mosaic Project to produce detailed maps of protected lands in coastal watersheds using geographic information systems technology.

### 2000 winter

Laudholm community supports the campaign for the new Maine Coastal Ecology Center construction with donations totaling \$2.45 million.

### 2001 July

Laudholm Trust hosts the first Painterly Day and Fresh Paint Auction.

### September

The Maine Coastal Ecology Center is dedicated on National Estuaries Day.

### 2002 March

The Coastal Resource Library at Wells Reserve opens.

### 2003 October

Laudholm Trust holds the first Punkin'fiddle festival as part of the Town of Wells 350th anniversary celebration.



### 2004

Laudholm Trust members approve making a gift of the Alheim house and property to the Wells Reserve. Trust staff moves into the farmhouse at the Reserve.

### April

President George W. Bush announces a new national wetlands policy at the Wells Reserve.

### 2005 Spring

Wells Reserve buildings are converted to green energy supply.

Laudholm Native Plant Sale is inaugurated with assistance from University of Maine Cooperative Extension and York County Master Gardeners.

### Summer

Wells Reserve and Laudholm Trust publish Laudholm: The History of a Celebrated Maine Saltwater Farm by Joyce Butler.

Wells Reserve is the first reserve to be added to the National Water Level Observation Network.

### 2006 April

Forest Learning Shelter is dedicated during Earth Day Celebration.



### June

Alheim Commons, a 20-bed dormitory facility, is dedicated.

### Summer

A 2½-acre parcel owned by Diane and Frederick Lord is purchased by the Wells Reserve with support from Laudholm Trust, the State of Maine, and NOAA.

### 2007 March

Laudholm Trust and Wells Reserve continue their commitment to historical preservation as renovations begin on ten buildings.