



SALMON FALLS WATERSHED COLLABORATIVE ACTION PLAN

Working to Protect Clean Drinking Water for Future Generations

THE SALMON FALLS RIVER WATERSHED: AN IMPORTANT DRINKING WATER RESOURCE

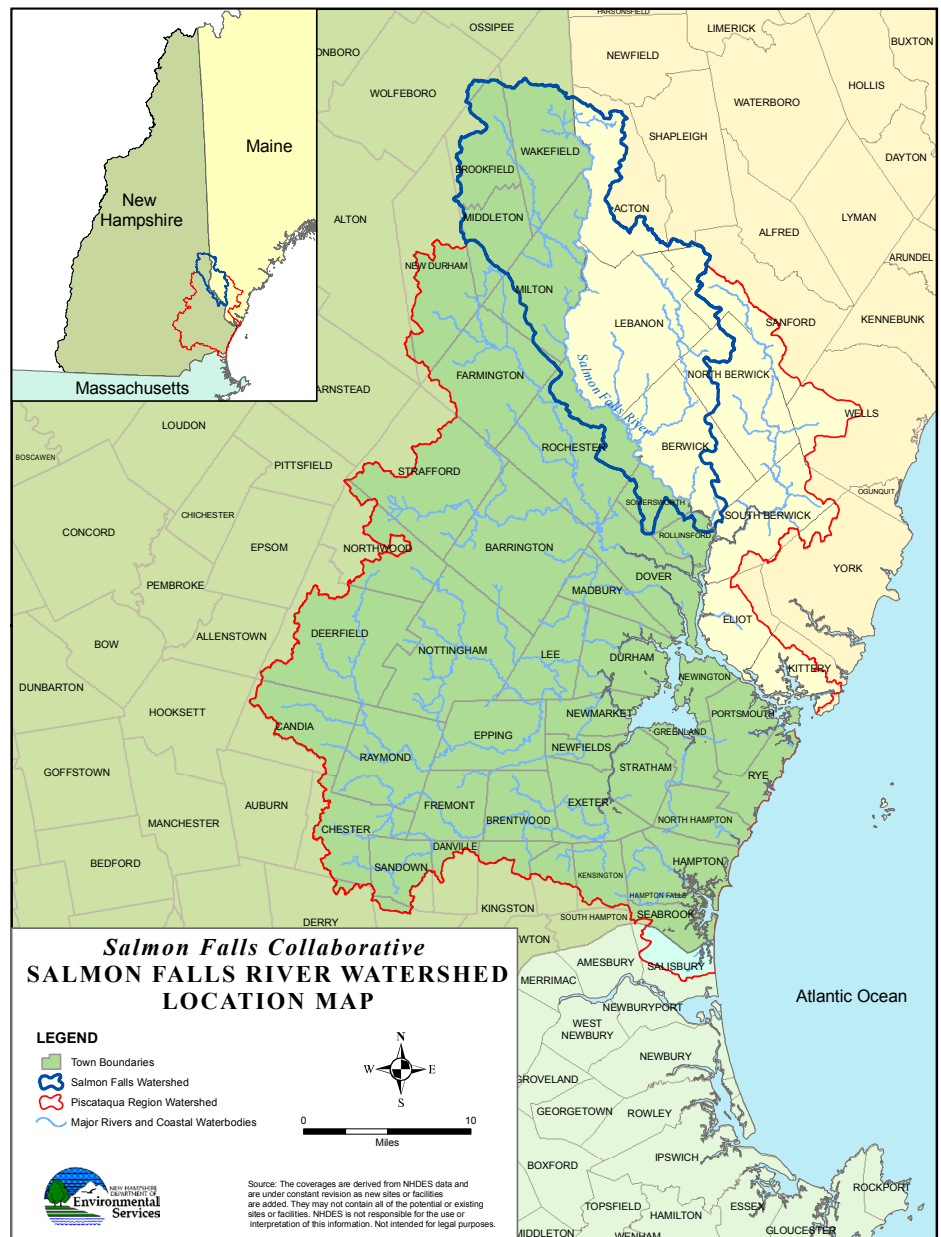
The Salmon Falls River flows from an ecologically diverse land area shared by the states of Maine and New Hampshire, and drains into the Great Bay estuary, a coastal ecosystem of national importance. Approximately 28,000 people currently rely on public water systems in the Salmon Falls watershed to provide clean drinking water. Many other households rely on private groundwater wells within this region to provide clean drinking water.

THREATS TO SAFE AFFORDABLE DRINKING WATER

While the watershed is a critical drinking water source area for many people, it is also threatened by increases in polluted runoff resulting from future population growth and the associated conversion of forested land to developed areas. A recently published report by the U.S. Forest Service, "Private Forests, Public Benefits," identified the rivers in the Piscataqua Region as **the most threatened in the nation** with regard to a potential decline in water quality due to conversion of private forested lands to housing.

THE NEED FOR AN ACTION PLAN

Without bold steps to conserve natural landscapes, carefully plan land use, utilize smarter "low impact development" approaches, and address potential contamination hotspots, the drinking water in the Salmon Falls watershed is likely to become threatened with reduced quality and increasing costs of treatment. **The Salmon Falls Watershed Collaborative Action Plan** was therefore developed to guide the implementation of these key measures to ensure clean water now and for the future.



Locator map of the Salmon Falls River watershed. The river forms part of the boundary between Maine and New Hampshire, and is a major tributary to the Great Bay estuary.



Source: The coverages are derived from NHDES data and are under constant revision as new sites or facilities are added. They may not contain all of the potential or existing sites or facilities. NHDES is not responsible for the use or interpretation of this information. Not intended for legal purposes.

IMPLEMENTING THE PLAN

The flow of water knows no boundaries. Protecting drinking water quality and quantity requires collaborative actions by municipalities, businesses, private land owners, and all levels of government working across borders.

The Action Plan reflects the priorities and ideas generated from the 2010 stakeholder workshop “Working Beyond Borders to Protect Water in the Salmon Falls Watershed” and complements existing water protection work being done by many different organizations, water districts, and municipalities. The Action Plan is organized into five top priority action strategies that need to be implemented in order to protect clean drinking water in the Salmon Falls watershed:

1. Assist watershed municipalities, land trusts, water suppliers, and land owners with conserving and maintaining lands most important for producing clean water.
2. Assist watershed municipalities with protecting drinking water by adopting low impact development (LID) technologies, stormwater best management practices (BMPs), and improved land use development regulations.
3. Assist municipalities and water suppliers with protecting aquifers and waterways by adopting local regulations that minimize pollution risk.
4. Prevent pollution and restore degraded waters through identification and clean-up of sources of contamination in the Salmon Falls watershed.
5. Engage and inspire governments, organizations, and citizens in collaborative actions to sustain the Salmon Falls watershed.

LEARN MORE & GET INVOLVED

To learn more about how to become involved with protecting clean drinking water in the Salmon Falls watershed please contact:

Derek Sowers,
Conservation Program Manager
Piscataqua Region Estuaries Partnership (PREP)
phone (603) 862-2641
email Derek.sowers@unh.edu



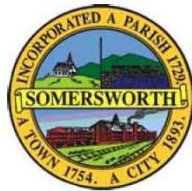
THE SALMON FALLS WATERSHED ACTION PLAN

To view or download copies of the Action Plan, or to learn about the Salmon Falls Watershed Collaborative, please visit the following webpage:
<http://www.prep.unh.edu/sfwc.htm>

THE ACTION PLAN FOR THE SALMON FALLS WATERSHED COLLABORATIVE WAS DEVELOPED BY THE FOLLOWING ORGANIZATIONS:



ACTON WAKEFIELD WATERSHEDS ALLIANCE



York County Soil & Water Conservation District

